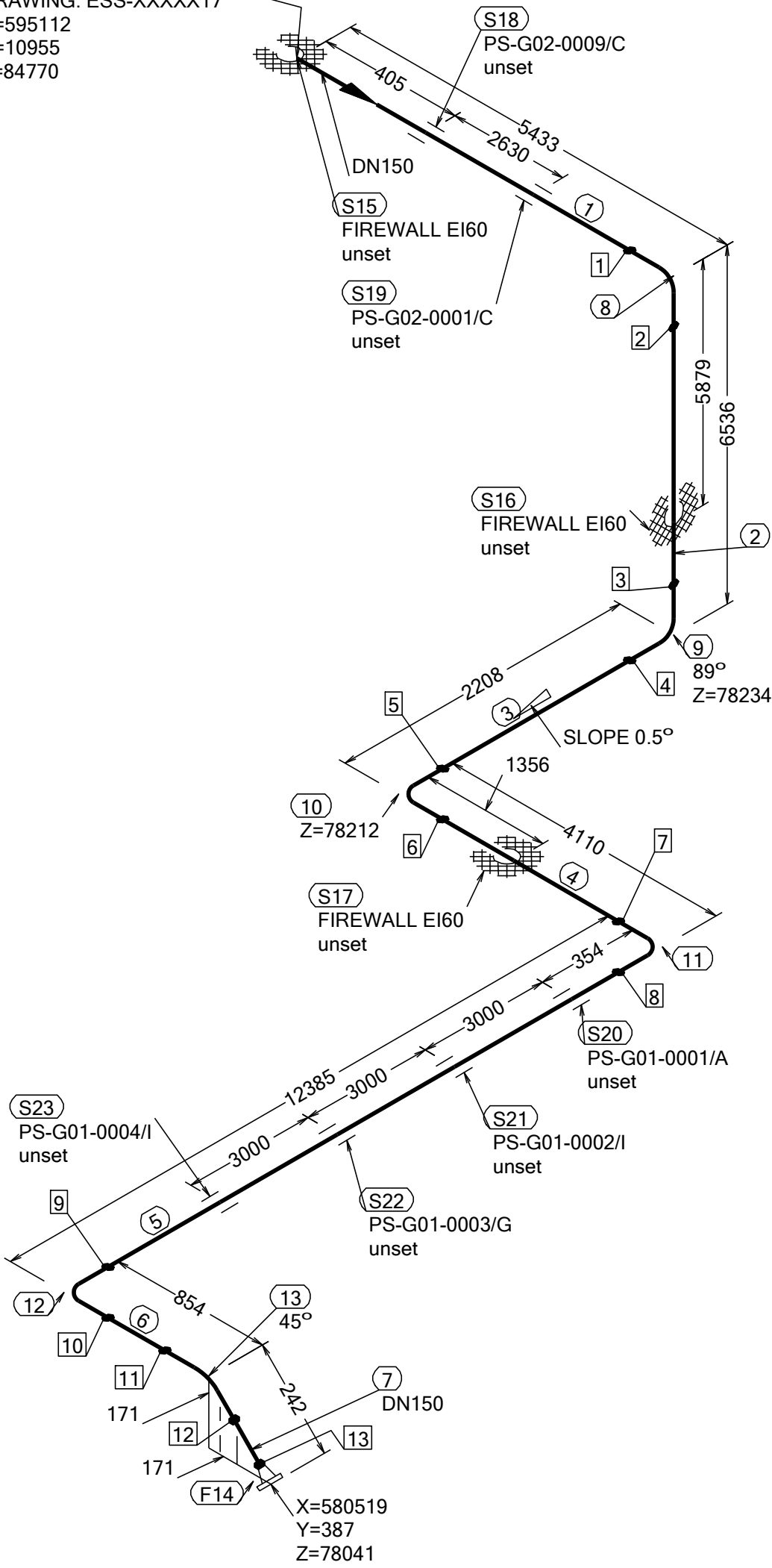


N (Y)


CONT. ON
DRAWING: ESS-XXXXX17
X=595112
Y=10955
Z=84770



WELD	WPS	FABRICATION MATERIALS					
1		PT NO	COMPONENT DESCRIPTION	DN	MATERIAL	QTY (mm)	REMARKS
2							
3							
4							
5							
6							
7							
8							
9							
10							
11							
12							
13							
		PIPE					
		1	PIPE, SS-EN 10217-7, TC1, 168.3x2.0	150	EN 1.4404	5204	
		2	PIPE, SS-EN 10217-7, TC1, 168.3x2.0	150	EN 1.4404	6080	
		3	PIPE, SS-EN 10217-7, TC1, 168.3x2.0	150	EN 1.4404	1752	
		4	PIPE, SS-EN 10217-7, TC1, 168.3x2.0	150	EN 1.4404	3652	
		5	PIPE, SS-EN 10217-7, TC1, 168.3x2.0	150	EN 1.4404	11927	
		6	PIPE, SS-EN 10217-7, TC1, 168.3x2.0	150	EN 1.4404	530	
		7	PIPE, SS-EN 10217-7, TC1, 168.3x2.0	150	EN 1.4404	92	

PT NO	COMPONENT DESCRIPTION	DN	MATERIAL	QTY (mm)	REMARKS
8	ELBOW 90, TYPE 3D, SS-EN 10253-4, TYPE A, 168.3x2.0	150	EN 1.4404	1	
9	ELBOW 90, TYPE 3D, SS-EN 10253-4, TYPE A, 168.3x2.0	150	EN 1.4404	1	
10	ELBOW 90, TYPE 3D, SS-EN 10253-4, TYPE A, 168.3x2.0	150	EN 1.4404	1	
11	ELBOW 90, TYPE 3D, SS-EN 10253-4, TYPE A, 168.3x2.0	150	EN 1.4404	1	
12	ELBOW 90, TYPE 3D, SS-EN 10253-4, TYPE A, 168.3x2.0	150	EN 1.4404	1	
13	ELBOW 45, TYPE 3D, SS-EN 10253-4, TYPE A, 168.3x2.0	150	EN 1.4404	1	
14	FLANGE WN, SS-EN 1092-1, TYPE 11, PN16	150		1	

PT NO	COMPONENT DESCRIPTION	DN	MATERIAL	QTY (mm)	REMARKS
15	PENETRATION ATTA	150		1	
16	PENETRATION ATTA	150		1	
17	PENETRATION ATTA	150		1	
18	ESS Atta	150		1	
19	ESS Atta	150		1	
20	ESS Atta	150		1	
21	ESS Atta	150		1	
22	ESS Atta	150		1	
23	ESS Atta	150		1	

WPS See Weldlist TBN	Design Temperature 50degC	Tightening Torque For Flange Joints TBN	P&ID Drawing Number ESS-0059673	General Layout Drawing Number TBN	Calculation Report ESS-0058702	Inspection Plan TBN	Area Code G01-NCL
Quality Level For Weldign Acc To TBN	Design Pressure 10bar (g)	Bend Radius N/A	Bending Procedure N/A	Coupling Installation Procedure TBN	Pressure Test Program TBN	Alternate System Tag	Date (First Issue) 170522
Weld Joint Efficiency Factor (Longitudinal) 1,0	Test Pressure 14.3bar (g)	Insulation Specification N/A	<div><div>Title/Name EUROPEAN SPALLATION SOURCE ERIC WATER COOLING SYSTEM CWM-CWS02 OVERVIEW ESS.ACC.E02.E02.WP0002 Document Number ESS-XXXXX43</div></div>				Scale -
Elevation (z) Acc To BCS	Quality Class MQC4-C	Insulation Thickness N/A					Format A2
	Media CWM	Allowance For Corrosion 0					Sheet 1 of 1
	Pipe Specification MQC4-W-PN16	Surface Treatment N/A					Revision A1

Rev	Description	Date	Drawn	Designed	Reviewed	Verified	Quality	Approved
A1	ISSUED FOR CDR	170522	FRPE	FRPE	AKCO	ANLU		